

ACE

F150

Hydraulic Mobile Crane

Capacity : 15 tonnes

Engine Power : 101 bhp.

Rough terrain and rugged, 4x4 articulated NextGen pick 'n' move crane with front mounted cabin.

**ACE INDIA'S NO. 1
CRANE BRAND**



- Front mounted ergonomically designed Cabin
- Improved kinematics with low Center of Gravity
- Slotted boom
- Self Adjusting hook block
- Fail safe air brakes
- Better creep speed
- Four wheel drive



*Nothing beats an **ACE***

Specifications

F 150

LIFTING CAPACITY	15 Tonnes	HOIST	Winch is driven by hydraulic motor and fitted with rope tensioner. Hoisting is provided through self adjusting hook block employing 4/6 falls of 13 mm dia rope
ENGINE	TATA (BS3 CEV), 4 Cylinder water cooled, Turbo charged and After Cooled engine or Suitable Engine.	Hoist Speed	50 Mtr/Min (Line Speed)
Max. Rating	101 HP (74.3 KW) at 2200 RPM	ELECTRICAL SYSTEM	24v, Negative earth.
TRANSMISSION	Heavy Duty Synchromesh with 8 Forward and 2 reverse speeds with high low range selector.	TYRES	11.00 x 20 - 16 PR (8 Nos.)
Axles	Front axle is rigidly mounted on the chassis and Rear axle is mounted with 2 Nos. leaf Springs.	Wheel Base	3800 mm
Drive	2 / 4 Wheel drive.	Wheel Track	1825 mm
Clutch	Heavy Duty, single, dry friction type hydraulic clutch.	SAFETY	<ul style="list-style-type: none"> • Hose Failure Protection • Audio Over hoisting Indication • Safety Brakes on Hoist • Self-Adjusting Hook Block • Front and rear wheel guards
Top Speed	40 KMPH on even metaled Road (without load)	STANDARD EQUIPMENT	<ul style="list-style-type: none"> • ROPS fully enclosed wide view cabin • Front and Rear work lights • Reflectors and rear view mirror • Tool kit • Cabin Fan • Wiper Motor • Gauges :- <ul style="list-style-type: none"> a) Water Temperature. b) Engine Oil Pressure c) RPM meter cum hour recorder d) Air Pressure • Rear view camera • Front Outriggers • Beacon Rotating Light
Gradeability	40 % (unladen)	OPTIONAL EQUIPMENT	<ul style="list-style-type: none"> • Fly jib (1.25 Tonnes Max. Capacity) • Spark arrestor • Safe load indicator/ LMI • Over Hoist hydraulic cutoff • Fire extinguisher • Cabin Front Glass Protector • Helper / Slinger Seat • Drag Winch • Front & Side Proximity Sensors
BRAKES	Pneumatically operated dual circuit brakes on Front and Rear wheels. Parking brake is pneumatically operated spring actuated fail safe type.	OPERATING WEIGHT	
STEERING	Hydraulically operated steering wheel with 45° Articulation on either side and turning radius of 7.5 Mtrs (approx) on outer rear wheels.	Front axle	5825 Kgs.
TELESCOPIC BOOM	4 part slotted boom, 2 part hydraulically operated & synchronized and 4th part power extended	Rear Axle	9700 Kgs.
BOOM LUFFING Range	- 10° to + 64°	Total Weight	15525 Kgs.
HYDRAULIC SYSTEM	<ul style="list-style-type: none"> • Gear / Infra Vane type Main Pump. Five spools control valve with built in Relief Valve. • Suction line has 100 mesh size Strainer while return line is fitted with 25 micron full flow filter. • Two double acting lift cylinders, one double acting extension cylinder and two double acting steering cylinders. 		

F150



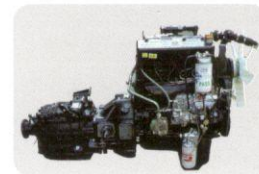
1 **OUTRIGGERS**
Front Outriggers for added safety during high lift operations.



2 **INCREASED VISIBILITY**
Bigger size front windscreen and re-routing of hoses provide much better front visibility.



3 **GROUND CLEARANCE**
High ground clearance of 300mm for easier rough terrain operation.



4 **ENGINE**
Best in class TATA 4 Cylinder engine having nation wide service support and spare parts availability.

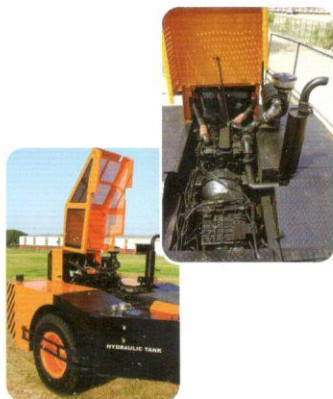


5 **ROPS CABIN**
Front mounted, ergonomically designed Cabin for better visibility and driveability.



6 **OPTIMIZED KINEMATICS AND LOW C.G.**

F 150 crane has been evolved/ designed keeping in mind operational safety parameters with low Center of Gravity (C.G.) providing best in class stability

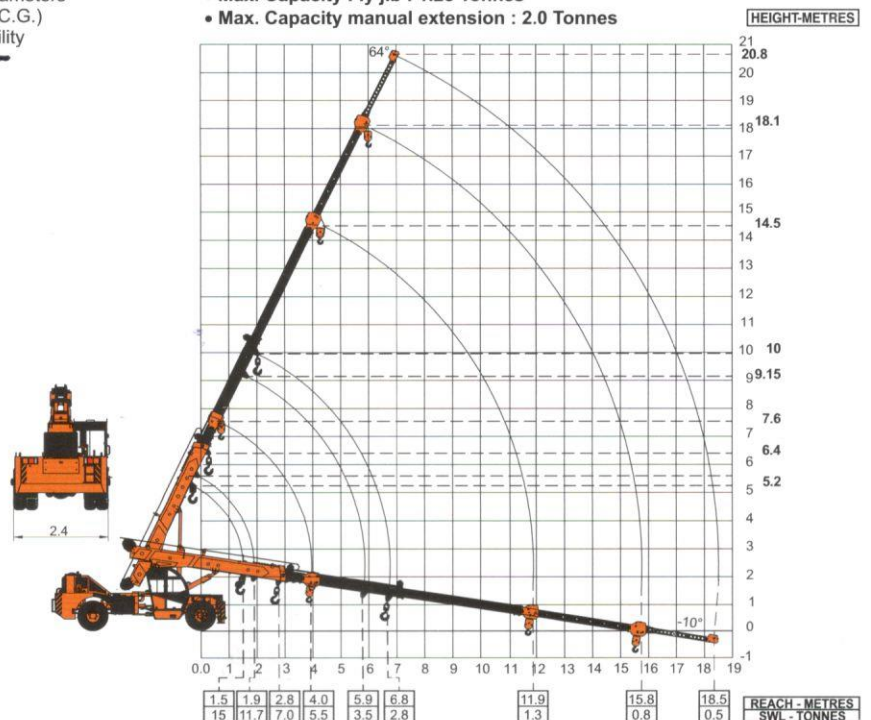


7 **EASY MAINTENANCE**

The engine is easily accessible for daily maintenance checks including battery, air filter, oil dipstick and cooling system

ACE F150 Crane with 4 part boom

- Max. Capacity Fly jib : 1.25 Tonnes
- Max. Capacity manual extension : 2.0 Tonnes



NOTE - SWL ARE BASED ON 85% STABILITY & STRENGTH

ALL DIMENSIONS IN 5%.

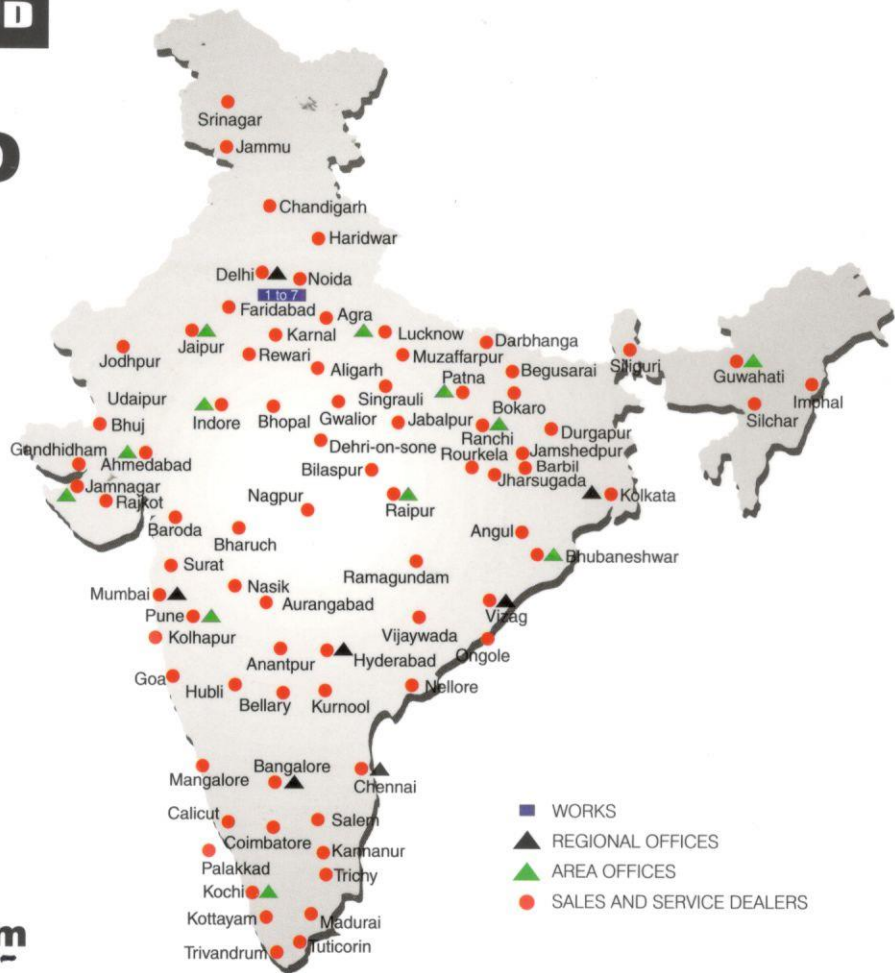
BUILT TO PERFORM



ACE INDIA'S NO. 1
CRANE BRAND

NETWORK

**RELIABLE AND
DEPENDABLE
EFFICIENCY**



**Toll Free Help Line
1800 1800 004**

www.ace-cranes.com

MARKETING H.Q.

4th Floor, Pinnacle
Surajkund, NCR-121009
Ph.: +91-129-4550000
Fax: +91-129-4550022
E-mail: marketing@ace-cranes.com

REGISTERED OFFICE

Dudhola Link Road, Dudhola
Palwal-121102, Haryana
Ph.: +91-1275-280111
Fax: +91-1275-280133
CIN: L74899HR1995PLC053860

MUMBAI OFFICE

31, "Kalpataru Court"
Chembur, Mumbai - 400074
Ph.: +91-22-25206846, 25207070
Fax: +91-22-25207071
E-mail: acemumbai@ace-cranes.com

KOLKATA OFFICE

"Forma Towers" 84-A, Second Floor
AJC Bose Road, Kolkata - 700014
Ph.: +91-9038070630
E-mail: acekolkata@ace-cranes.com

CHENNAI OFFICE

1st Floor, "Alsa Regency", 165
Eldams Road, Alwar Pet
Chennai - 600018
Ph.: +91-44-24314253
Fax: +91-44-24314252
E-mail: acechennai@ace-cranes.com

HERE TO SERVE YOU.

SPARE PARTS & SERVICE

ACE has all India Sales and Service network operating out of all the major cities. These outlets are fully equipped to provide genuine spare parts and services by company trained engineers. These outlets are further supported by company officials based at Delhi, Mumbai, Chennai, Kolkatta, Ahmedabad, Surat, Pune, Jaipur, Chandigarh, Ranchi, Raipur, Indore, Bhubneshwar, Lucknow, Jamnagar, Hyderabad, Bangalore, Guwahati, Patna, Vizag & Kochi.

ACE

Action Construction Equipment Ltd.

Contact:

CVI
CERTIFIED
MANAGEMENT SYSTEM
ISO 9001

ACE reserves the right to alter any specifications without prior notice. Dimensions, weights & capacities mentioned herein are variable by ± 5%. Accessories if shown are not part of the Standard Equipment.