

# ACE

# TM 250

## Truck Mounted Cranes

Capacity : 25 tons.

Engine Power : 165 bhp @ 2400 rpm

Rugged and reliable  
truck mounted cranes

**ACE** INDIA'S LEADING  
MOBILE CRANE COMPANY



Nothing beats an **ACE**

## Specifications

**TM 250**

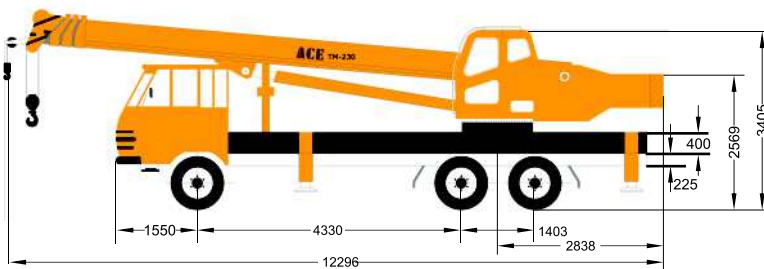
<b>Truck Chassis</b>	The crane is mounted on modified & adequately reinforced truck chassis (6 x 4)
<b>Engine</b>	Ashok Leyland, water cooled diesel engine developing 165 bhp @ 2400rpm
<b>Clutch</b>	Dry, Single Plate (380mm), hydraulically actuated diaphragm type.
<b>Transmission</b>	Six Speed Synchronesh Gear box.
<b>Top Speed</b>	60 Kmph.
<b>Brakes</b>	Air pressurized, diaphragm operated with dual Line arrangement. Flick Valves operated pneumatic hand brake on rear wheels only.
<b>Tyres Size</b>	10.00 X 20-16 PLY Rating (10+1)
<b>Out riggers</b>	Four hydraulically operated outrigger beams with vertical hydraulic jacks fitted with lock valves. Outrigger blocks are removable & stowable.
<b>Hydraulic System</b>	Gear type hydraulic pump driven by Transmission PTO,
<b>Super Structure</b>	Fabricated with high tensile steel plates and is capable of unlimited slewing in either direction. Super structure is mounted on a sealed, internal teeth slewing ring.
<b>Boom Derricking</b>	Double acting hydraulic cylinder with counter balance safety valve.
<b>Slewing</b>	Gear type hydraulic motor drives a pinion through reduction gear unit. Double Counter balance valve is provided for smooth control & operations.
<b>Telescopic Boom</b>	Double acting hydraulic cylinder is provided for boom telescoping. Four part boom is fabricated from high tensile steel and is extendable from 10 mtrs to 31 mtrs.

<b>Hoist System</b>	2 nos. winches are provided with separate hook blocks. Gear type hydraulic motor driving grooved hoist barrel via reduction gear unit. The system is fitted with Counter balance valve to control the speed of lowering
<b>Hook Block</b>	4 sheaves block is provided
<b>Hoist Rope</b>	16 mm Diameter
<b>Capacities</b>	
Hydraulic Tank	400 ltrs.
Fuel Tank	335 ltrs.
<b>Operator's Cabin (Crane)</b>	Cabin with maximum all round vision is fitted with lockable door. All controls for crane motions & electrical controls are provided in the cabin. Cabin light & fan is also fitted.
<b>Safety Equipment</b>	<ul style="list-style-type: none"> <li>• Safe load indicator which provides radius &amp; hook indication with visual indication of approach to overload &amp; audible indication of overload condition.</li> <li>• Over load and over hoist cut off.</li> <li>• Pressure relief in main circuit.</li> <li>• Pilot operated check valve provided in all the cylinders.</li> </ul>
<b>Performance Data</b>	
• Derrick Angle	-2° to 80°
• Derricking time	50-60 secs
• Telescoping time	80-90 secs
• Slew	0-2 RPM
• Hoist    Main:	Single line speed 120 m/min.
Auxiliary:	Single line speed 120 m/min.
• Outriggers	
Out	12 secs
In	10 secs
Down	17 secs
UP	12 secs
<b>Axle Loads</b>	
Front Axle	5950 kgs
Rear Axle	18950 kgs
Total weight	24900 kgs
<b>Optional Equipment</b>	Side folding lattice Jib - 8 mtrs.

# Rated Lifting Capacity ( in Kgs. )

# TM 250

Radius mtrs.	360° BLOCKED					
	Jib Closed 10.0 M	Jib Extended 10.0-14.2M	Jib Extended 14.2-18.4M	Jib Extended 18.4-22.6M	Jib Extended 22.6-26.8M	Jib Extended 26.8-31.0M
2.75	25000					
3.0	23000	15000	13500			
3.5	22000	15000	13500			
4.0	20000	15000	13500	10500		
4.5	17000	14000	13000	10500		
5.0	16000	14000	13000	10000	8000	
5.5	14000	13000	12500	10000	8000	
6.0	12200	12000	12000	9500	7500	6400
6.5	11000	11200	11000	9000	7500	6400
7.0	9000	10000	10000	8000	7200	6000
8.0	7400	8000	8200	7500	6900	5600
9.0		6500	6200	6500	6200	5200
10.0		5100	5200	5300	5000	4700
11.0		4200	4200	4200	4200	4200
12.0		3500	3500	3300	3300	3300
14.0		2500	2500	2500	2400	2200
16.0				1900	1800	1800
18.0				1360	1360	1250
20.0					1000	1000
22.0						650



Boom Elevation	FOR 31m + 8m	
80°	3000	3000
78°	2800	2800
76°	2700	2700
74°	2600	2600
72°	2500	2500
70°	2350	2300
68°	2200	1900
66°	2000	1550
64°	1900	1250
62°	1800	950
60°	1650	750
58°	1500	550
56°	1200	400
54°	1000	
52°	800	
50°	600	
45°	400	

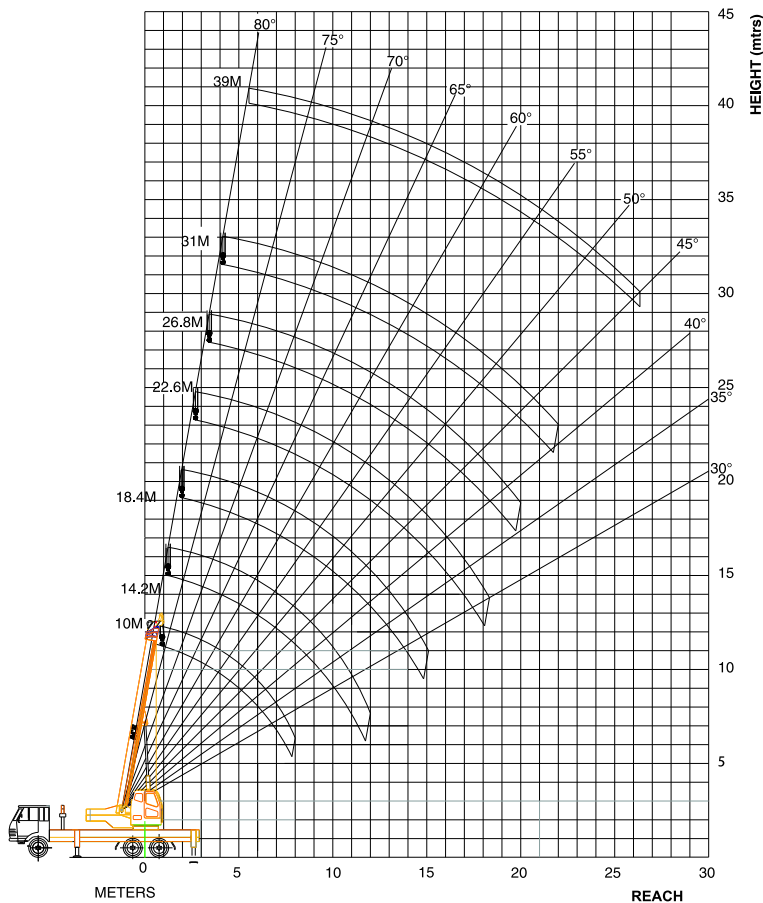
# ACE

# TM 250

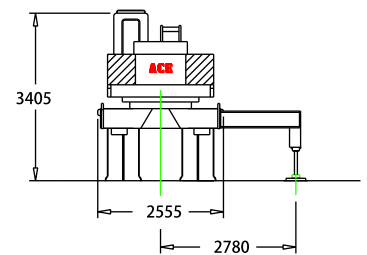
25 Tons



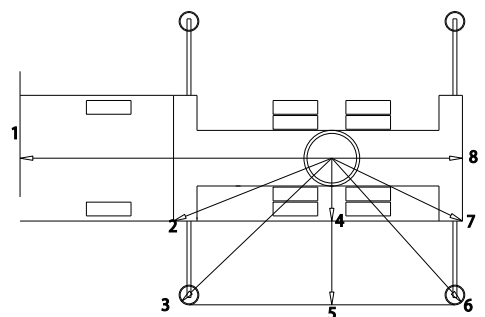
## Lifting dimensions



## Outrigged dimensions



Jib Position	Deduction Meter
X	Meter
1	6.34
2	3.46
3	4.22
4	1.27
5	2.98
6	3.95
7	2.95
8	2.65



# ACE



**Mobile Cranes (3 - 50 Tons)**



**Piling Rigs**



**Crawler Cranes**



**Mobile Tower Cranes**



**Tractors**



**Forklifts**



**Vibratory Rollers**



**Backhoe Loader**



**Wheeled Loaders**



**Tower Cranes**



**Motor Grader**

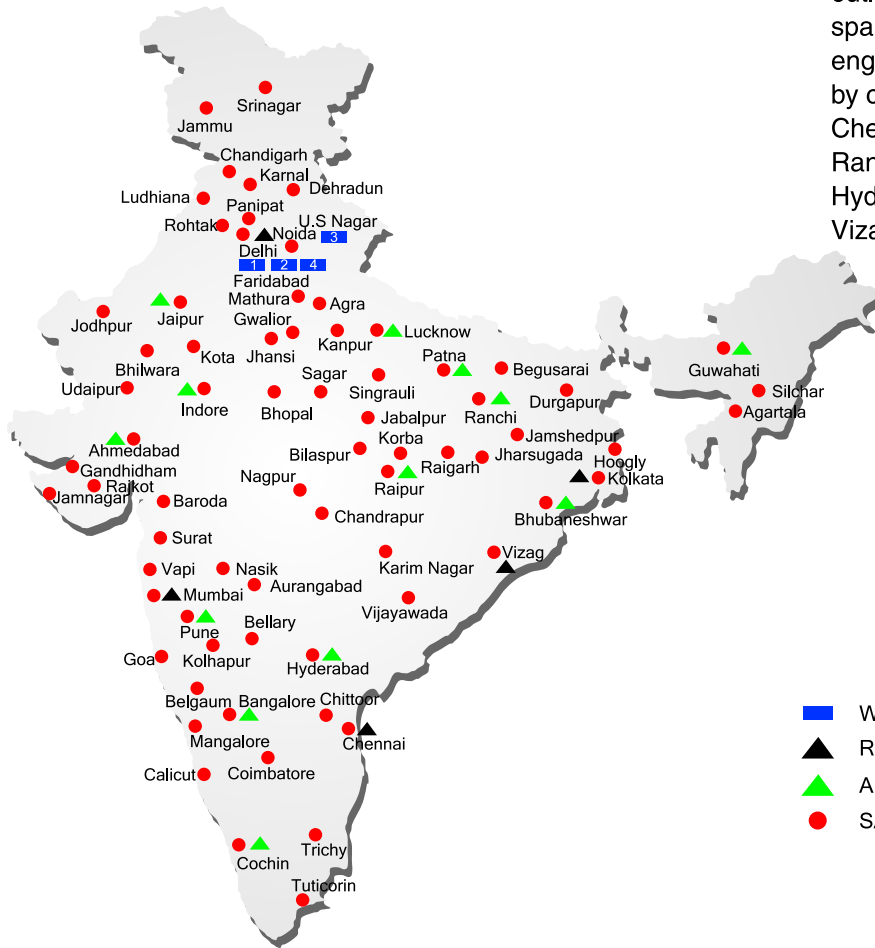


**PTR**



*Nothing beats an **ACE***

# ALL INDIA NETWORK



## SPARE PARTS & SERVICE

ACE has all India Sales and Service network operating out of all the major cities. These outlets are fully equipped to provide genuine spare parts and services by company trained engineers. These outlets are further supported by company officials based at Delhi, Mumbai, Chennai, Kolkatta, Ahmedabad, Pune, Jaipur, Ranchi, Raipur, Indore, Bhubneshwar, Lucknow, Hyderabad, Bangalore, Guwahati, Patna, Vizag & Cochin

- WORKS
- ▲ REGIONAL OFFICES
- ▲ AREA OFFICES
- SALES AND SERVICE DEALERS



### MARKETING H.Q.

5 th Floor, "TDI Center", Jasola , New Delhi - 25  
 Ph.: +91-11-40549900 (30 Lines) Fax : 40549922  
 E-mail: marketing@ace-cranes.com

### MUMBAI OFFICE

401, Shrikant Chamber, S.T. Road  
 Next to R.K. Studio, Chembur, Mumbai - 71  
 Telefax : 022-25207068  
 E-mail: forkliftswest@ace-cranes.com, acemumbai@ace-cranes.com

### KOLKATA OFFICE

"Fomra Towers" 84-A, Second Floor, AJC Bose Road,  
 Kolkatta - 14. Ph. 033-32578307, Telefax: 22274428  
 E-mail: forkliftseast@ace-cranes.com, acekolkatta@ace-cranes.com

### CHENNAI OFFICE

1st Floor, "Alsa Regency", 165, Eldams Road,  
 Alwar Pet, Chennai - 18  
 Ph.: 044 - 24314253 Telefax : 24314252  
 E-mail: forkliftsouth@ace-cranes.com, acechennai@ace-cranes.com



**Action Construction Equipment Ltd.**

Contact:



ACE / Original equipment manufacturer reserves the right to alter any specifications without prior notice. Dimensions, weights & capacities mentioned herein are variable by ±5%. Accessories shown are not part of the Standard Equipment.

