

5.0T Automatic Transmission Diesel Forklift

Capacity : 5000 kg @ 600 mm L.C.



“Available
with
Pneumatic
brakes
also as
an Option”

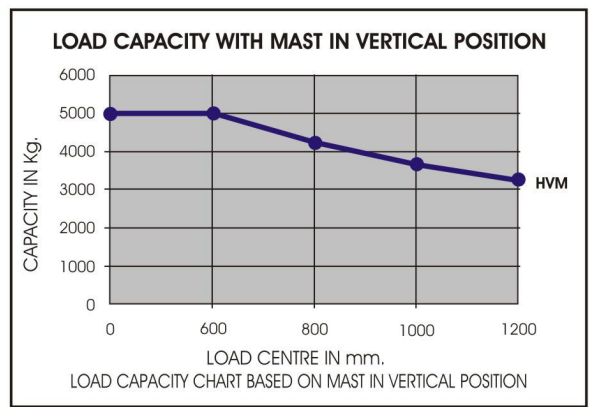


MAX

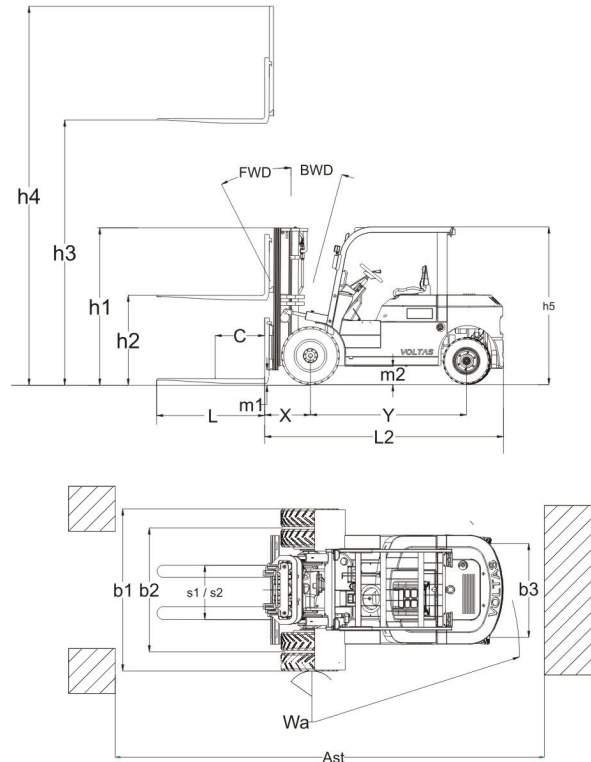
**Reliability
Performance
Productivity**

SPECIFICATIONS					
GENERAL	1	MANUFACTURER			KION INDIA
	2	MODEL			DVX 506 AT MAX
	3	CAPACITY	LIFTING LOAD	Kg	5000
	4	LOAD CENTER	DISTANCE	C mm	600
	5	POWER UNIT	ENGINE TYPE		DIESEL
	6	TYRES	PNEUMATIC (PD), CUSHION (BCD)		BCD - STD, PD-OPTION
DIMENSIONS	7	LIFT HEIGHT	MAX FORK HEIGHT (HVM / HVT)	h3 mm	3660 / 4200
	8	STANDARD MAST	STD FREE LIFT(HVM / HVT)	h2 mm	NIL / 1300
	9	FORK CARRIAGE	ISO CLASS		4A
	10	FORK	THICKNESS X WIDTH X LENGTH	mm	65 x 150 x 1220
	11	FORK SPREAD	MINIMUM - MAXIMUM	s1/s2 mm	330 / 1510
	12	TILT ANGLE	FORWARD / BACKWARD (HVM / HVT)	Fwd/Bwd Deg	6 / 10 & 6 / 6
	13		LENGTH TO FACE OF FORKS	L2 mm	3290
	14		OVERALL WIDTH	b1 mm	1760
	15	OVERALL DIMENSIONS	FRONT OVERHANG	X mm	510
	16		HEIGHT WITH COLLAPSED MAST (HVM / HVT)	h1 mm	2530 / 2100
17		HEIGHT WITH EXTENDED MAST WITH LBR (HVM / HVT)	h4 mm	5100 / 5600	
18		OVERHEAD GUARD HEIGHT	h5 mm	2350 / 2125	
19	TURNING RADIUS		Wa mm	3000	
20	AISLE WIDTH	WITH PALLET 800 x 1200 ACROSS FORKS	Ast mm	4810	
		WITH PALLET 1200 x 1000 ACROSS FORKS	Ast mm	5010	
PERFORMANCE	21		TRAVEL SPEED	Kmph	18
	22	SPEEDS WITH STD HVM	LIFTING - LADEN / UNLADEN	m / s	0.40 / 0.50
	23		LOWERING - LADEN / UNLADEN	m / s	0.45 / 0.38
	24	GRADABILITY	LADEN / UNLADEN	%	17 / 24
	25	STEERING TYPE	POWER STEERING		HYDROSTATIC
FRAME & TYRES	26	WEIGHT	SERVICE WEIGHT - UNLADEN	KG	6850
	27	AXLE LOADS	LADEN -FRONT / REAR (WITH STD HVM MAST)	KG	10685 / 1165
	28		UNLADEN -FRONT / REAR (WITH STD HVM MAST)	KG	3075 / 3775
	29	TYRES	NO - FRONT / REAR	Nos	4 / 2
	30		SIZE - FRONT	mm	7.00 X 12 - 16PR
	31		SIZE - REAR	mm	7.00 X 12 - 16PR
	32	WHEEL BASE		Y mm	2200
	33	TRACK	FRONT / REAR	b3/b2 mm	1390 / 1280
	34	GROUND CLEARANCE	AT MAST	m1 mm	150
	35		AT FRAME	m2 mm	170
	36	PARKING BRAKE			MECHANICAL
	37	SERVICE BRAKE			HYDRAULIC FOOT PEDAL
DRIVE	38		MANUFACTURER / MODEL		SIMPSON TSJ 436
	39	ENGINE	ENGINE RATING	HP	75
	40		RATED RPM	RPM	2200
	41		RATED TORQUE	Kgm@RPM	295@1500
	42		NUMBER OF CYLINDERS		4
	43	GEAR BOX	TRANSMISSION		AUTOMATIC
	44		NO OF SPEEDS (FWD / REV)		2 / 2
	45		GEAR SHIFT		MECHANICAL BY SYNCHRONISERS

SAFETY:TRUCK CONFORMS TO STABILITY REQUIREMENT AS PER "BIS" & "ISO" STANDARDS
 ALL SPECIFICATIONS ARE SUBJECT TO TOLERANCE OF +/- 12% APART FROM THOSE GOVERNED BY BIS
 DUE TO CONTINUOUS DESIGN IMPROVEMENTS THE DIMENSIONS ARE SUBJECT TO CHANGE WITHOUT NOTICE



** UNLADEN GRADABILITY IS LIMITED TO SKIDDING OF TYRES.
 CAPACITY AT MFH FOR HVT MAST IS 4250 Kg



KION India Private Ltd.

Plant : 5/4 Chandan Nagar, Pune-Nagar Road,
 Pune - 411014, Maharashtra, India

Enquiries : in.enquiries@kiongroup.com

Contact : 020 - 67342-194 / 154 / 193 / 208 / 130

Sales Toll Free No. : 1800 270 9982



F.MKT:KION 302.140.00

Feb. 2018 / 00 - Qty.: 2000